



**WORKING
TOGETHER** 

WORKING TOGETHER

We work together with you in the knowledge that we need to demonstrate exceptional performance to satisfy your requirements.

Personal consultation, premium product quality and outstanding delivery reliability and adherence to deadlines have been the key factors for our long-term customer relationships and our associated mutual success since the company was founded in 1848.

We supply our customers with metal turned parts, cold-formed parts, pipe and wire bending parts and joining elements, such as ball studs, rivets, bolts, sleeves, connection pipes, gearshift tubes, sampling valves, exhaust brackets, wire frames, hinges, wrapped bushings, pins, screws and weld nuts.

We do not consider ourselves to be merely a supplier, but rather a strategic, reliable and stock-holding partner of the capital goods industry.

*Humbach supplies the best components
for your products.*



TURNING

Our turned parts are produced in accordance with the highest quality standards.

Further machining and finishing options, as well as our perfected storage and logistics solutions make us the ideal partner for your projects.

For example, our components are used in fittings, punched parts, assemblies, gear boxes, valves and plastic distributors.

APPLICATION

- Automotive supply industry
- Electrical industry
- Furniture industry
- Plumbing industry/valve industry
- Fittings industry
- Lock industry
- Household appliance industry
- Furnishing industry
- Measurement/control technology
- Mechanical engineering/
plant engineering
- Vehicle construction

PRODUCT GROUPS

- **Ball studs**
(with optional recesses or threads)
- **Pins**
(with optional recesses or threads)
- **Mandrels**
- **Special-purpose bolts**
(with optional recesses or threads)
- **Threaded bolts**
- **Rivets**
- **Shafts**
(with optional recesses or threads)
- **Screws**
(e.g. with trapezoidal threads, internal and external hex or Torx, turned or rolled threads)
- **Connecting pieces**



SERVICES

Turned parts with complex geometries and demanding milling operations (e.g. asymmetric geometries, transverse holes and threads) up to 43 mm in diameter

Long turned parts with diameters of between 5 and 22 mm and a turning length of up to 200 mm (milling across the Y-axis)

NC turned parts with diameters of between 5 and 65 mm (e.g. with spanner flats, eccentric operations and trapezoidal threads)

Ring-turned parts (e.g. with recesses and threads)

PRODUCTION

Our production department works with ninety turning machines, turning/milling centres and continuous feed grinding machines:

- **Single spindle turning machines**
(CNC and conventional)
- **Ring-turning machines**
(e.g. for manufacturing stainless steel shafts and axles)
- **Long turning machines**
(CNC, diameter between 4 and 22 mm)
- **Multi-spindle machines**
(diameter between 4 and 28 mm)
- **Milling/turning centres**
(CNC, diameter between 4 and 65 mm)

The geometry editing area is attached to an in-house grinding shop. Our portfolio also includes heat treatment, surface treatment as well as component assembly.

MATERIALS

- **Stainless steels**
e.g. 1.4301, 1.4305, 1.4401, 1.4571
- **Free-cutting steels**
e.g. 11SMn30+C (1.0715),
11SMnPb30+C (1.0718)
- **Steels**
e.g. St 37-2, C15
- **Brass/red brass**
e.g. CuZn, CuSnZnPb, CuZn39Pb3 (MS58)
- **Aluminium**
e.g. AlMgSi, AlCuMgPb



COLD FORMING

Saving what can be expensive material is the primary benefit of cold massive forming compared to machining.

Typical products that we deliver using cold forming are:

Screws, bolts, axles, rivets, nuts, ball studs, ball pivots and sleeves in line with the drawings supplied.

We supply customised cold formed parts and provide comprehensive support in finding solutions to your problems.

Picking and delivery take place from our central warehouses as per your requirements.

SERVICES

- **Cold heading & finishing**
Diameter from M3 to M22
- length from 8 to 300 mm
- **Cold forming & finishing**
Diameter from M5 to M32
- length up to 120 mm
- **Free-form parts**
Diameter up to 23 mm
- length up to 160 mm

APPLICATION

- Automotive supply industry
- Electrical industry
- Furniture industry
- Plumbing industry/valve industry
- Fittings industry
- Lock industry
- Household appliance industry
- Furnishing industry
- Measurement/control technology
- Mechanical engineering/
plant engineering
- Vehicle construction

SURFACES

- galvanised
- yellow galvanised
- black galvanised
- green galvanised
- olive galvanised
- nickel-plated
- chromium-plated
- hot-dip galvanised
- black anodised
- phosphated
- ruspert
- dacromet
- geomet
- delta coating
- zinc-nickel alloy
- in accordance with the automotive industry requirements

PRODUCT GROUPS

- **Ball studs**
(with optional recesses or threads)
- **Pins**
(with optional recesses or threads)
- **Mandrels**
- **Special-purpose bolts**
(with optional recesses or threads)
- **Threaded bolts**
- **Rivets**
- **Shafts**
(with optional recesses or threads)
- **Screws**
(e.g. with trapezoidal threads, internal and external hex or Torx, turned or rolled threads)
- **Connecting pieces**
- **Wrapped bushings**

MATERIALS

- **Steel with low carbon content**
C1008 / 1010 / 1015 / 1018 / 1022 / 12L14 / 1215
- **Steel with medium carbon content**
C1035 / 1040 / 1045 / 35ACR / 40ACR / 1144
- **Steel with high carbon content**
C1050 / 1060 / 1065 / 1070 / 1080
- **Boron steel**
C10B21 / 10B33
- **Alloy steels**
SCM435 / SCM440 / 4037
- **Stainless steel**
18-8S / S(302 / 303 / 304 / 305) / 316 / 410 / 430 / 430F / 347
- **Aluminium**
1010 / 2024 / 5052 / 5056 / 6061
- **Brass**
CDA260 / 270 / C3600 / silizium bronze 651



PIPE BENDING WIRE BENDING

We manufacture precision-bent parts made of pipe and solid material, based on samples or drawings, in small- and large-scale production.

Extensive experience in pipe bending technology, from design through to material selection, make us a strong partner in this field. From simple pipe bends through to the manufacture of complex bending geometries or complete assemblies with special weld and solder joints, we offer reliable solutions and on-time delivery.

Ready-to-mount components can be brush deburred, chamfered, faced, threads can be cut or moulded, or manufactured with holes and recesses as well as with the special surface finishing.

SERVICES

- ◉ Prototype construction
- ◉ Small-scale production
- ◉ Large-scale production
- ◉ Finishing
- ◉ Complex 3D bent parts
- ◉ Wire diameter from 1.5 to 16 mm
- ◉ Pipe diameter from 4 to 60 mm

MACHINING OPTIONS

- ◉ Chamfering
- ◉ Embossing
- ◉ Welding
- ◉ Swaging
- ◉ Bending
- ◉ Thread rolling
- ◉ Punching
- ◉ Reducing
- ◉ Pressing
- ◉ Grooving
- ◉ Knurling
- ◉ Trimming
- ◉ Flaring

APPLICATION

- ◉ Automotive supply industry
- ◉ Electrical industry
- ◉ Furniture industry
- ◉ Plumbing industry/valve industry
- ◉ Fittings industry
- ◉ Lock industry
- ◉ Household appliance industry
- ◉ Furnishing industry
- ◉ Measurement/control technology
- ◉ Mechanical engineering/
plant engineering
- ◉ Vehicle construction

MATERIALS

- ◉ Stainless steel
- ◉ Spring steel
- ◉ Steel
- ◉ Copper
- ◉ Brass
- ◉ Aluminium



FASTENERS

We manufacture turned parts on self-designed special-purpose machines specifically for punched parts/fittings or cold-formed parts on simple and multi-stage presses.

For example, these include rivets, bolts, pins, sleeves, screws, nuts, bushings, axles, riveted bolts and wrapped bushings.

Further machining and finishing options, as well as our perfected storage and logistics solutions make us the ideal supplier for your projects.



SERVICES

- Lot sizes from 1,000 units manufactured as turned parts
- Lot sizes from 50,000 units manufactured as turned parts or cold-form parts
- Ø 1,5 mm to 65 mm
- Length from 2 mm to 200 mm

SURFACES

- Glossy
- Polished
- Galvanised
- Coated
- Hardened

MATERIALS

- 11 SMn Pb 30 +C
- 11 SMn 30 +C
- Stainless steel (e.g. 1.4104, 1.4305, 1.4301)
- Structural steel
- Brass
- Aluminium
- Additional materials on request

APPLICATION

- Automotive supply industry
- Electrical industry
- Furniture industry
- Plumbing industry/valve industry
- Fittings industry
- Lock industry
- Household appliance industry
- Furnishing industry
- Measurement/control technology
- Mechanical engineering/plant engineering
- Vehicle construction
- Plastic injection moulding

PRODUCT GROUPS

- Ball studs** (with optional recesses or threads)
- Pins** (with optional recesses or threads)
- Mandrels**
- Special-purpose bolts** (with optional recesses or threads)
- Threaded bolts**
- Rivets**
- Shafts** (with optional recesses or threads)
- Screws** (e.g. with trapezoidal threads, internal and external hex or Torx, turned or rolled threads)
- Connecting pieces**



》 *Humbach is committed to the highest quality standards!
This principle is at the heart of who we are and what we do.*

QUALITY MANAGEMENT 》

We are certified in accordance with DIN EN ISO 9001:2015 and DIN EN ISO 14001:2015.
Conformity in accordance with IATF 16949:2016 has been certified.

Upon request, we have the capacity to subject your parts to a 100% control.
Sorting takes place on automated test systems and includes the sorting for defined test characteristics.



CUSTOMER SERVICE >

To us, customer service means being available for you, understanding you and quickly developing solutions to problems.

> LOGISTIC MANAGEMENT

Upon request, we can keep adequate stock available to reflect the expected demand or specific circumstances.

Our logistics also constantly strives for quantity, deadline and quality improvements in our delivery capacity and includes our perfectly organised delivery availability.



> DOCUMENT MANAGEMENT

Our document management system is completely integrated into the SAP system as a database. We create and maintain correct and complete company documents and information.

The system ensures that all departments and employees can quickly access the necessary data at all times.

> SAP-SYSTEM

We work with the SAP Business One software for small and medium-sized businesses, this is because we are integrated into the international value chain of the automotive supplier industry.

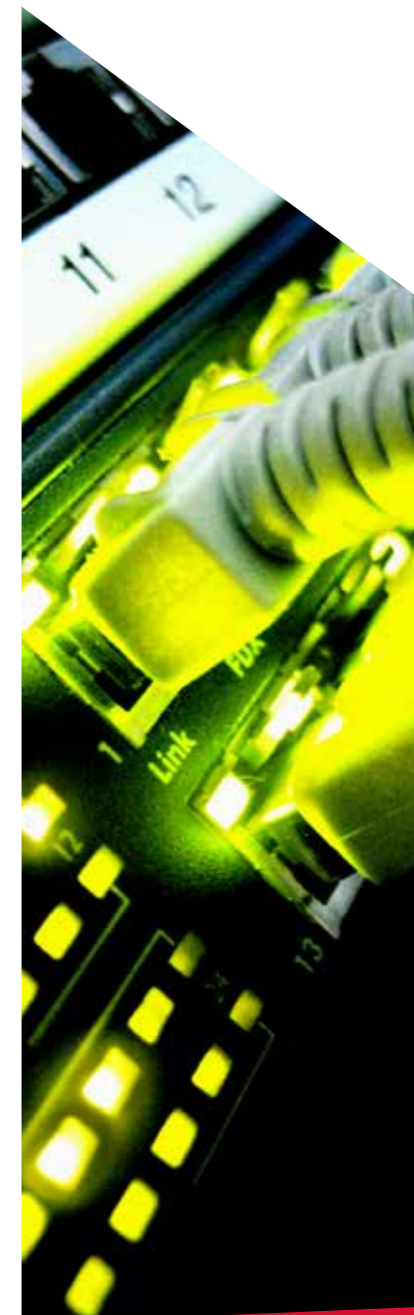
This central data repository means that all relevant company information is always at hand. This enables quick decisions and fast responses to your changing requirements.

> CONFIDENTIALITY

Protection of confidential information

We consider, respect and are fully aware of matters relating to the confidentiality and security of information and data pools of our business partners and handle these professionally.

In cases in which the disclosure of confidential information is appropriate, we conclude individual non-disclosure agreements.



WORKING TOGETHER



Humbach GmbH & Co. KG

Im Brauke 13
D- 57392 Schmallenberg

Consultation & Sales

Fon: +49 (0) 29 72 | 97 84 7 10
vertrieb@humbach.de

Headquarters

Fon: +49 (0) 29 72 | 97 84 7 0
Fax: +49 (0) 29 72 | 97 84 7 70

info@humbach.de
www.humbach.de

We appreciate the proximity to our customers!

To ensure short communication paths we have further sales and consulting offices in:

- ⊙ **Poland**
- ⊙ **Italy**
- ⊙ **Spain**
- ⊙ **Belgium**
- ⊙ **Netherlands**



HUMBACH